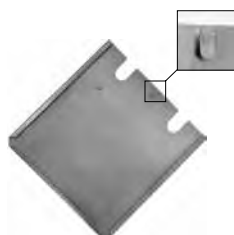


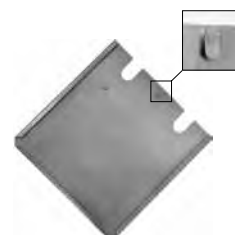
Cod. 91298
 Portacartello inox semplice
 con gancio 300x300 ± 1mm
 Simple stainless steel panel
 holder with safety hook
 300x300 ± 1 mm



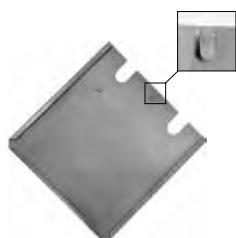
Cod. 91047
 Portacartello inox semplice
 con gancio 310x310 ± 1mm
 Simple stainless steel panel
 holder with safety hook
 310x310 ± 1 mm



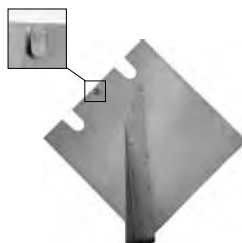
Cod. 91285
 Portacartello inox semplice
 con gancio 250x250 ± 1mm
 Simple stainless steel panel
 holder with safety hook
 250x250 ± 1 mm



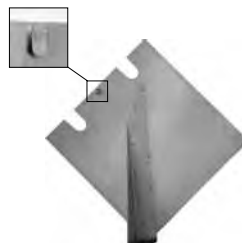
Cod. 91278
 Portacartello lamiera zincata
 con gancio 300x300 ± 1mm
 Zinc plated panel holder
 with safety hook 300x300 ± 1mm



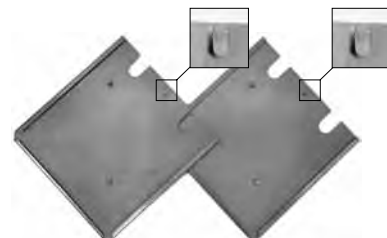
Cod. 91284
 Portacartello lamiera zincata
 con gancio 250x250 ± 1mm
 Zinc plated panel holder
 with safety hook 250x250 ± 1mm



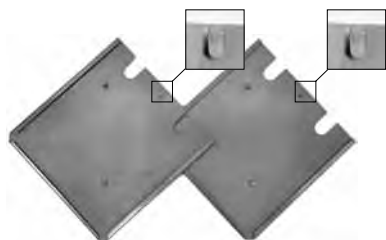
Cod. 91075
 Portacartello inox semplice
 con gancio 300x300
 con supporto ± 1mm
 Simple stainless steel panel
 holder with safety hook
 and bracket 300x300 ± 1 mm



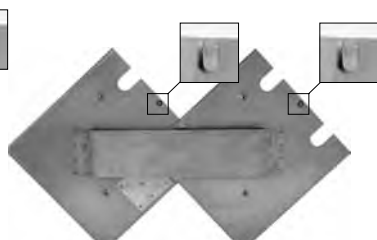
Cod. 91077
 Portacartello inox semplice
 con gancio 310x310
 con supporto ± 1mm
 Simple stainless steel panel
 holder with safety hook
 and bracket 310x310 ± 1 mm



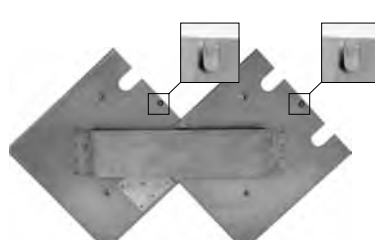
Cod. 91072
 Portacartello inox doppio
 con gancio 300x300 ± 1mm
 Double stainless steel panel
 holder with safety hook
 300x300 ± 1 mm



Cod. 91046
 Portacartello inox doppio
 con gancio 310x310 ± 1mm
 Double stainless steel panel
 holder with safety hook
 310x310 ± 1 mm



Cod. 91074
 Portacartello inox doppio
 con gancio e supporto
 300x300 ± 1mm
 Double stainless steel panel
 holder with safety hook and
 bracket 300x300 ± 1 mm



Cod. 91076
 Portacartello inox doppio
 con gancio e supporto
 310x310 ± 1mm
 Double stainless steel panel
 holder with safety hook and
 bracket 310x310 ± 1 mm



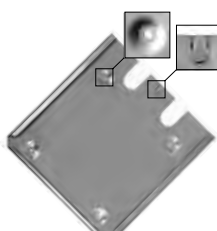
Cod. 91073
 Piastra alluminio porta adesivi
 300x300 ± 1mm
 Aluminium adhesive-holder plate
 300x300 ± 1mm



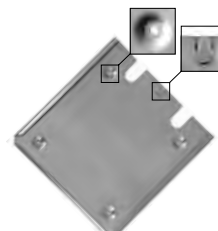
Cod. 91078
 Piastra alluminio porta adesivi
 310x310 ± 1mm
 Aluminium adhesive-holder plate
 310x310 ± 1mm



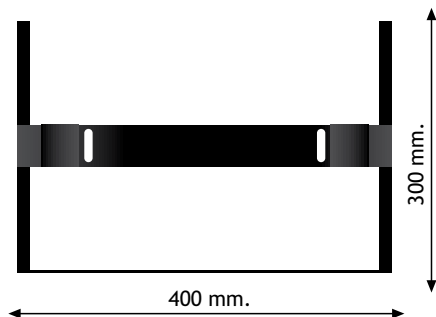
Cod. 91100
 Piastra alluminio porta adesivi
 250x250 ± 1mm
 Aluminium adhesive-holder plate
 250x250 ± 1mm



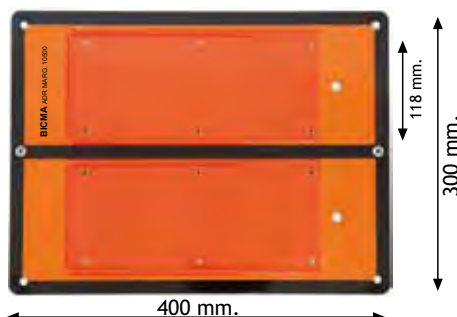
Cod. 92260
 Portacartello 300x300 inox
 con bugne e gancio ferma pannello
 Stainless steel panel holder
 300x300 with bosses and
 safety hook



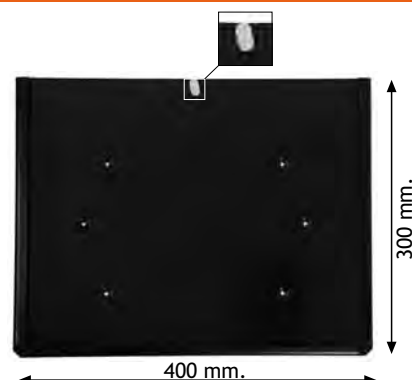
Cod. 92250
 Portacartello 250x250 inox
 con bugne e gancio ferma pannello
 Stainless steel panel holder
 250x250 with bosses and
 safety hook



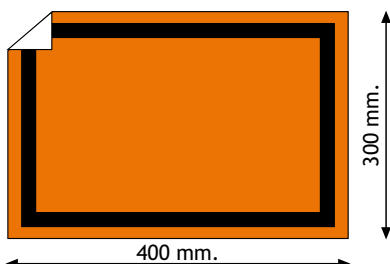
Cod. 92152
 Portacartello doppio con gancio per cartelli 300x400 mm.
Double panel holder with safety hook for panels 300x400 mm.



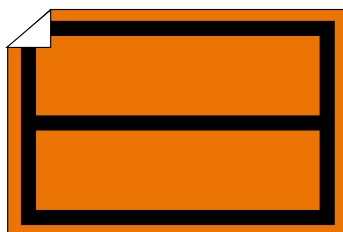
Cod. 91041
 Pannello portanumeri inox 400x300 mm. per numeri 70x118 mm con supporto
Stainless steel holder 400x300 mm. for numbers 70x118 mm with support.



Cod. 91295
 Pannello inox verniciato nero 300x400 con gancio
Black painted stainless steel panel 300x400 with safety hook



Cod. 99701 Adesivo PVC neutro A.D.R. 400x300 mm.
PVC Self-adhesive A.D.R. neutral device 400x300 mm.



Cod. 99702 Adesivo PVC neutro A.D.R. con banda centrale 400x300 mm.
PVC Self-adhesive A.D.R. neutral device with median strip 400x300 mm.

Cod. 99751 Pellicola rifrangente A.D.R. 400x300 mm.
A.D.R. reflecting film 400x300 mm.

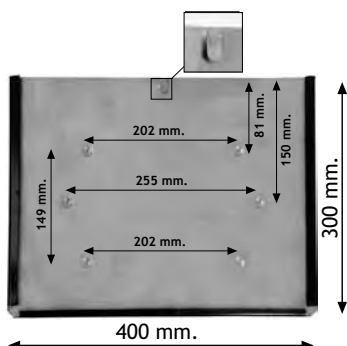
Cod. 99752 Pellicola rifrangente A.D.R. con banda centrale 400x300 mm.
A.D.R. reflecting film with median strip 400x300 mm.



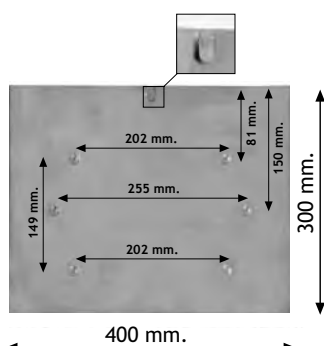
Cod. 91358
 Adattatore inox 400x134 per numeri 70x118 da applicare su slitta 91068 e 91296
Stainless steel adaptor 400x134 for numbers 70x118 to be applied with holder 91068 and 91296



Cod. 91296
 Slitta inox verniciata nera per numeri 94x134 e adattatore 91358
Black painted stainless steel holder for numbers 94x134 and adapter 91358



Cod. 91297
 Portapannello inox con gancio e bordo per cartelli 400x300 mm.
Stainless steel panel holder with safety hook and black PVC coated edge for panels 400x300 mm.



Cod. 91279
 Portapannello zincato con gancio e senza bordo per cartelli 400x300 mm.
Zinc plated panel holder with safety hook, without black PVC coated edge, for panels 400x300 mm.

Cod. 91282
 Portapannello zincato con gancio e bordo per cartelli 400x300 mm.
Zinc plated panel holder with safety hook and black PVC coated edge for panels 400x300 mm.

Cod. 91283
 Portapannello inox con gancio e senza bordo per cartelli 400x300 mm.
Stainless steel panel holder with safety hook, without black PVC coated edge, for panels 400x300 mm.



Cod. 91069
 Supporto inox omega per portacartello
Universal stainless steel bracket



Cod. 91070
 Supporto inox a squadra per portacartello
Stainless steel squaring support for panel holder

Cod. 91289
 Supporto zincato omega per portacartello
Universal zinc plated bracket for panel holder

Cod. 91290
 Supporto zincato a squadra per portacartello
Zinc plated squaring support for panel holder



Cod. 95090 Borsa vuota per A.D.R.
 Empty A.D.R. bag



Cod. 95088 Borsa "ADR" economica
 Economic "ADR" bag



Cod. 95160 Borsa vuota polipropilene
 nera, mm 420x305x155
 Empty black polypropylene
 case, mm 420x305x155



Cod. 95100 Pala anti-scintilla
 Spark-proof shovel



Cod. 95101 Pala pieghevole anti-scintilla
 Folding spark-proof shovel



Cod. 95201 Lampada crepuscolare
 Emergency lamp



Cod. 95203 Lampada portatile
 6 V.
 Emergency
 hand-lamp 6 V.



Cod. 95202 Pila per lampada
 crepuscolare
 Battery for
 emergency lamp



Cod. 95252 Cono in PVC
 h.50 cm.
 PVC
 cone h.50 cm.



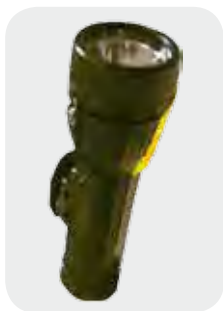
Cod. 95254 Cono in gomma
 pesante h.50 cm.
 con pellicola rifrangente
 Heavy rubber cone
 h.50 cm.
 with reflecting film



Cod. 95255 Cono in PVC
 h.30 cm.
 PVC cone h.30 cm.



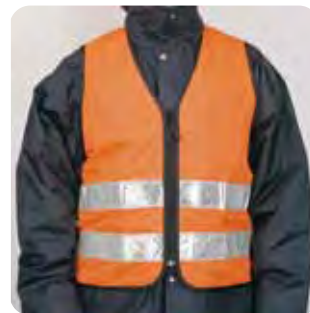
Cod. 95256 Cono in gomma pesante
 h.30 cm. con pellicola
 rifrangente
 Heavy rubber cone
 h.30 cm. with
 reflecting film



Cod. 95205 Torcia antideflagrante
Spark-proof torch



Cod. 95253 Nastro bianco rosso mt.200
White/red tape mt.200



Cod. 95272 Gilet di sicurezza EN 471 arancio
Orange reflecting safety waistcoat EN 471



Cod. 95274 Gilet di sicurezza EN 471 giallo
Yellow reflecting safety waistcoat EN 471



Cod. 95472 Grembiule
Apron



Cod. 95301 Imbragatura E 0210 ©
Sling E 0210



Cod. 95302 Cordino per imbragatura
Fixing rope



Cod. 95400 Stivali n. 42,43,44
Boots n. 42,43,44



Cod. 95401 Stivali in PVC
n. 42,43,44
PVC Boots n. 42,43,44



Cod. 95410 Scarpe antinfortunistica
n. 42,43,44
Safety shoes n. 42,43,44



Cod. 95451 Guanti PVC
PVC gloves



Cod. 95452 Guanti anticalore
Thermal gloves



Cod. 95474 Completo giacca pantalone
Jacket and trousers



Cod. 95471 Tuta Proshield 10 bianca
 in polipropilene C11366
*White Proshield 10
 polypropylene protective
 overall C1136*



Cod. 95500 Elmetto di sicurezza ©
Safety helmet



Cod. 95501 Occhiali a maschera
Ventilated elastic glasses



Cod. 95503 Flacone lava occhi
Eyewash bottle



Cod. 95504 Liquido lava occhi
Eyewash liquid



Cod. 95517 Bottiglia lavaggio
 oculare 200 ml.
 soluzione fisiologica
*Eyewash bottle with
 200 ml. saline solution*



Cod. 95506 Maschera pienofacciale
 con filtro ABEK2-P3
*Full face mask with
 filter ABEK2-P3*



Cod. 95510 Semimaschera SGE 46
 con filtro ABEK1-P3
*Half mask SGE 46 with
 filter ABEK1-P3*



Cod. 95511 Semimaschera TP2000-R
 con 2 filtri intercambiabili
 ABEK1-P3
*Half mask TP2000-R with 2
 replaceable filters ABEK1-P3*



Cod. 95551 Materiale assorbente kg. 1
Absorbent material kg. 1



Cod. 95555 Materiale
 assorbente
 in fusti kg.12
*Absorbent
 material in
 buckets of 12 kg*



Cod. 95552 Kit assorbente composto da 4 fogli e 2 salsicciotti
Kit absorbent material



Cod. 95603 Set soccorso
First-aid kit



Cod. 95601 Set soccorso 6 persone
First-aid kit 6 people



Cod. 95604 Valigetta primo soccorso
 DM388 ALL.2
First aid case DM388 ALL.2



Cod. 95650 Tappeto copritombino
 cm. 80x60
Plastic manhole cover sheet cm. 80x60



Cod. 95453 Manicoti trasparenti
Transparent muffs



Cod. 95519 Kit pulizia paletta + scopina
Cleaning kit broom + shovel



Cod. 95151 Martello in gomma
Rubber hammer



Cod. 95651 Tappeto copritombino
 cm. 100x100
Plastic manhole cover sheet cm. 100x100



Cod. 95652 Tappeto copritombino
 cm. 80x80
Plastic manhole cover sheet cm. 80x80